

# GET YOUR RAIL INDUSTRY WORKER CARD



**1 DAY TURNAROUND  
FOR CAT 3 MED,  
TTSA AND RIWC!**

**To work in or around the Rail Corridor in Victoria, most individuals will be required to hold a Rail Industry Worker Card (RIWC).**

**If you are planning on working in the rail industry and need a RIWC, we recommend completing the following:**

- Category 3 Rail Medical (for non-safety critical work)
- White Card (Construction/Induction Card)
- Metro Train Track Safety Awareness
- SWIRC – Safely Work in the Rail Corridor Course

**How the day works:**

- 7-9am: The medical team at Aakira Medical Services complete Category 3 Rail Medicals
- 7-9am: Training Ahead Australia assists with organising your RIWC, from start to finish
- 9am-5pm: Metro Train Track Safety Awareness Course runs

**We have laptops available downstairs to book in your SWIRC Course.**

**For course guides, full course information and pricing please phone 1300 355 900 or visit [www.trainingahead.com.au](http://www.trainingahead.com.au)**

*Training Ahead Australia is approved to deliver the Metro Train Track Safety Awareness  
Training Ahead Australia RTO Code: 45462*



# WHAT WE CAN HELP YOU WITH:

## METRO TRAIN TRACK SAFETY AWARENESS - SAFELY ACCESS THE RAIL CORRIDOR

Anyone working on the Metro Network and Within a Victorian rail corridor is required to complete the Metro Train Track Safety Awareness Course

## CATEGORY 3 MEDICAL

To work in the Danger Zone, you will require a minimum Category 3 Rail Medical

## RAIL INDUSTRY WORKERS CARD

Rail Industry Worker is a national competency management system for rail workers. TAA can assist setting up your RIWC to ensure rail readiness and compliance is met.

### You will also need to book the following:

#### • Safely Work in the Rail Corridor (SWIRC)

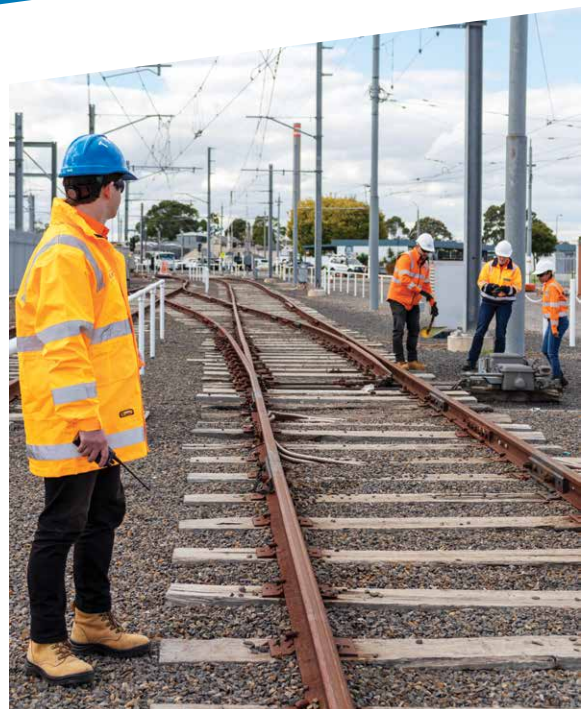
You can book this 1 day course through the Metro Academy at [www.metrotrains.com.au/academy](http://www.metrotrains.com.au/academy).

### If you are working on the V/Line or ARTC Network, you will also require:

#### • V/Line and ARTC Induction

Before commencing works on the V/Line or ARTC network, the Contractor Inductions must be uploaded to your RIWC.

*Please Note: Before working on Australia's rail network, it is your responsibility to ensure you have the correct job roles and competencies. Obtaining a RIWC does not mean you are automatically approved to go onsite. Please confirm with your employer for all requirements necessary before commencing work.*



For course guides, full course information  
and pricing please phone **1300 355 900**  
or visit [www.trainingahead.com.au](http://www.trainingahead.com.au)

Training Ahead Australia is approved to deliver the Metro Train Track Safety Awareness  
Training Ahead Australia RTO Code: 45462



TRAINING  
AHEAD  
AUSTRALIA